

OI400 Glider

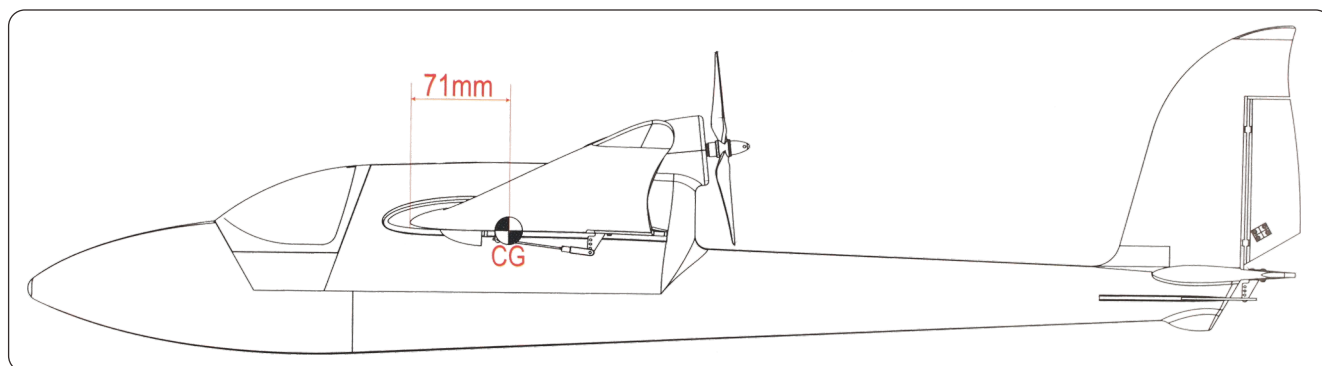
QUICK SETUP MANUAL

Specifications:

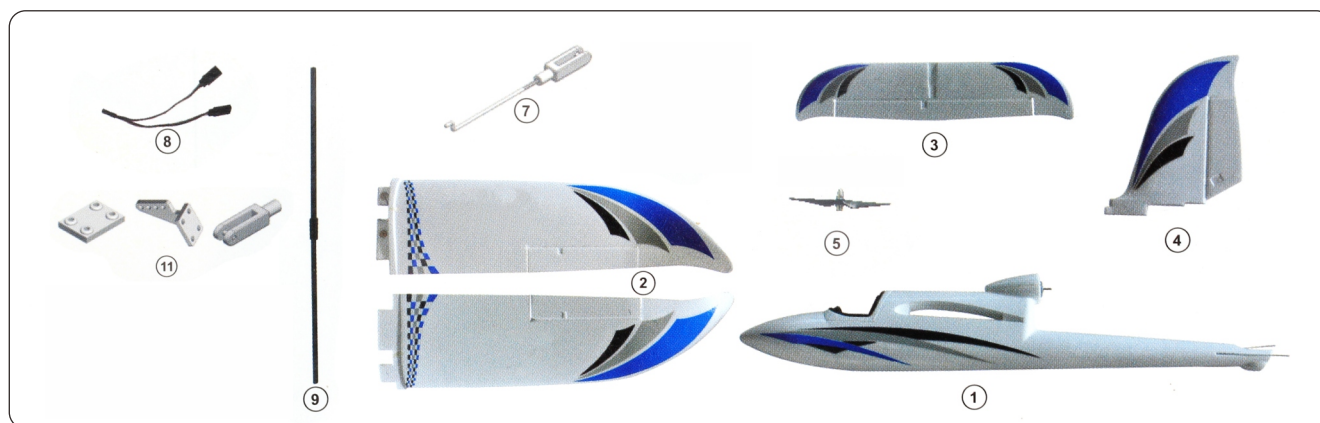
Wingspan : 1400mm / 55.1 in
Length: 925mm / 36.4 in
Weight: 650 g / 22.9 oz w/ Battery
Wing area: 23.8 dm²
Wingloading: 27.3 g/dm²
Motor: 2010-1860KV Out runner brushless
ESC: 20A
Battery: 3S, 11.1V, 1300mAh, 20C Li-Po (required & not included)
Servo: 9g×4
Propeller: 5×5E
Radio System: 4CH Tx and 6CH Rx (required & not included)



Make sure the center of gravity (CG) is as indicated in the following diagram.



Product list



1.Fuselage

2.Main Wing

3.Horizontal stabilizer

4.Vertical stabilizer

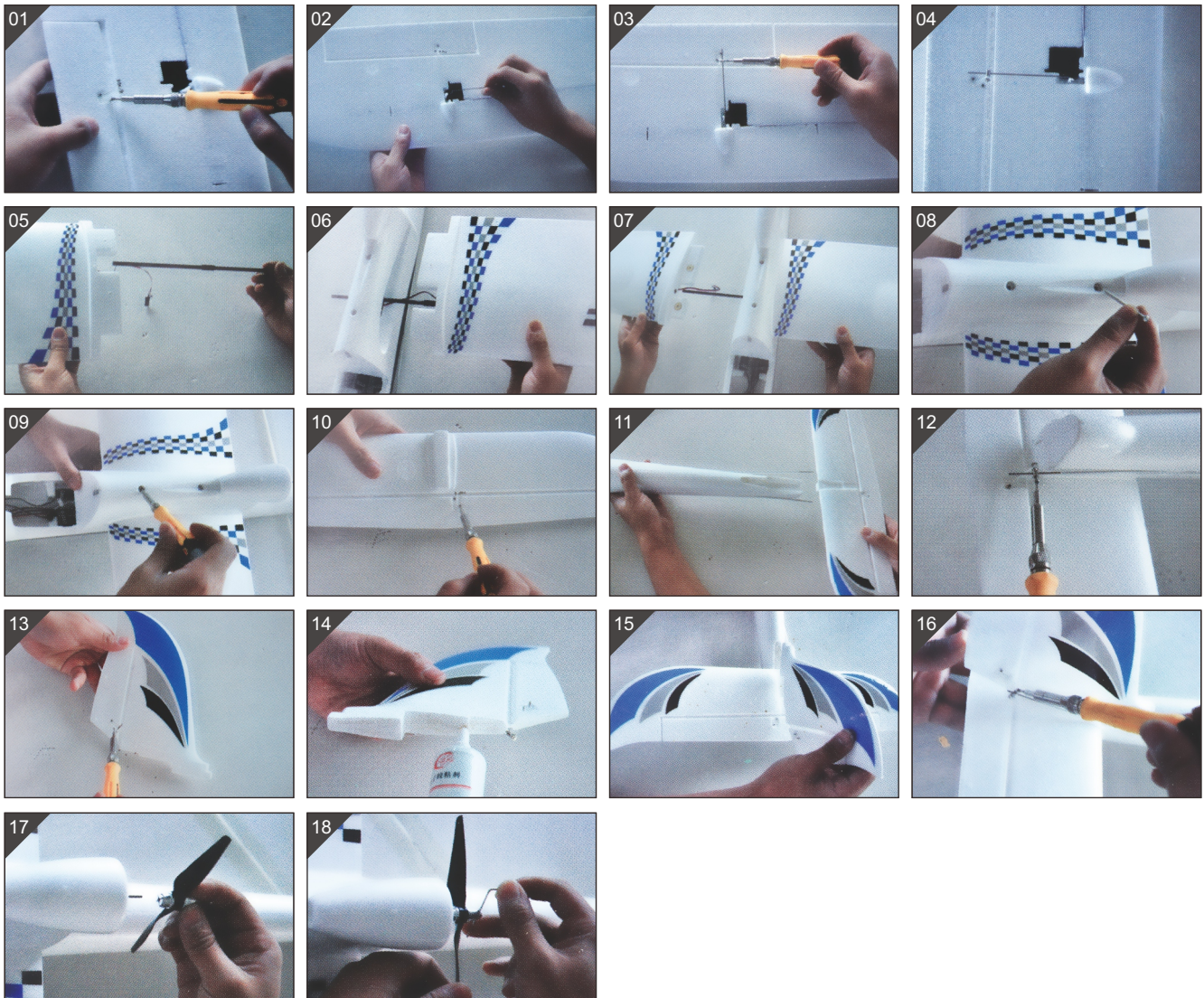
5.Propeller

7.Control Rod

8.Y-Splitter

9.Wing Rod

11.Control Parts



Assembly Instruction:

- 1.(01)(02)(03)(04)Use a tool to fix and install the aileron.Install the rod to the wing.This rod connects the servo to the wing.
- 2.(05)(06)(07)(08)(09) Push the wing rod into the wing as shown. Fix the main wing panel to the fuselage .Use a tool to fix and install the main wing onto the fuselage.
- 3.(10)(11)(12)Use a tool to fix and install the vertical tail.Remove any excess glue and hold it in position until the glue sets.Install the linkage rod to the vertical tail.The rod connecting the servo to the fuselage is pre-assembled.
- 4.(13)(14)(15)(16)Use tool to fix and install the stabilizer as shown.Remove any excess glue and hold it in position until the glue sets.Install the linkage rod to the stabilizer.The rod that connects the servo in the fuselage is pre-assembled.
- 5.(17)(18)Attach the propeller as indicated in the picture. Use a cross head screw driver to tighten it.