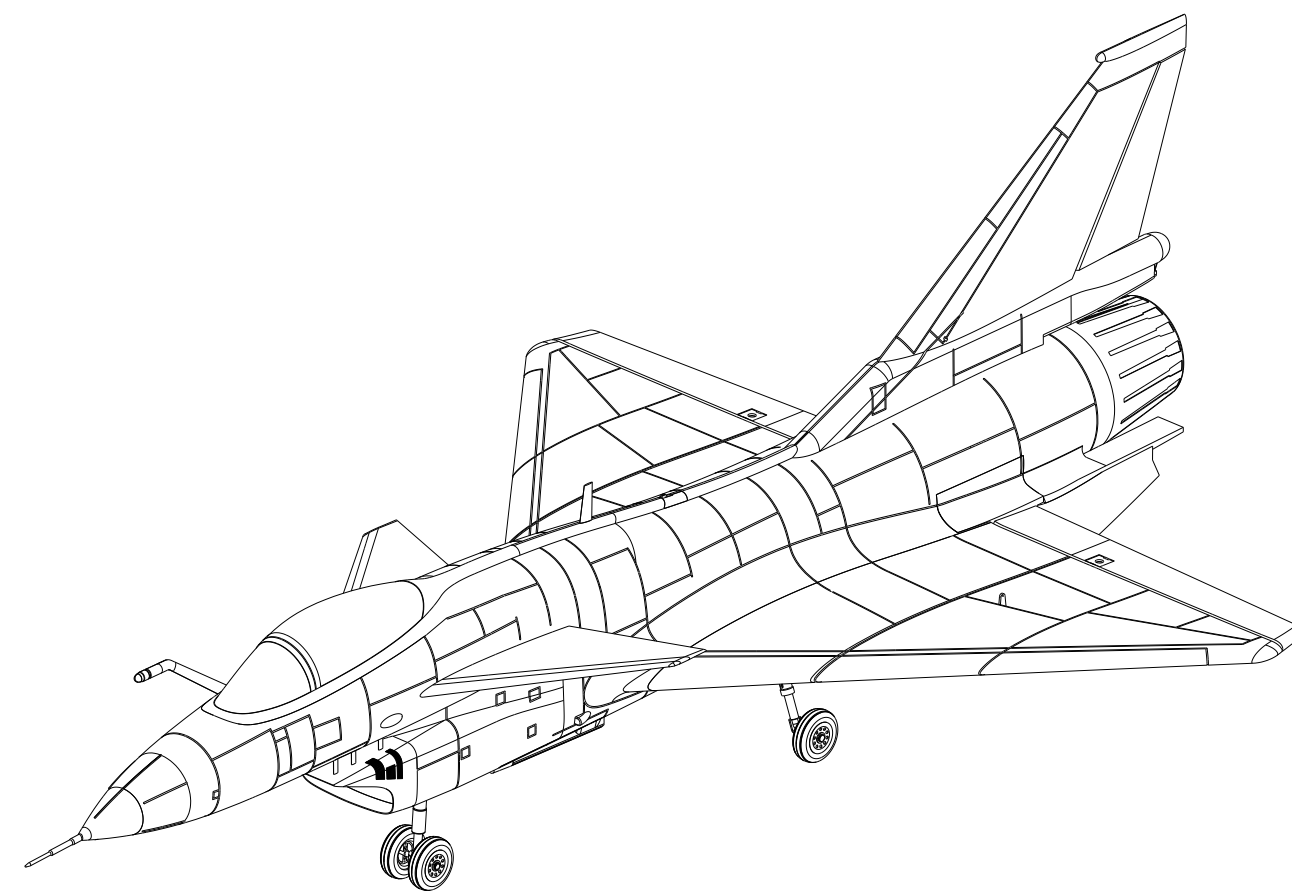


HSDJETS

105mm J-10 EDF 快速组装说明 QUICK SETUP MANUAL



规格 / Specifications:

翼展 / Wingspan	956 mm / 37.64in
机长 / Length	1668 mm / 65.67 in
重量 / Weight	3700g / 130.51oz 4500g / 158.73oz (含6s电池 / with 6s battery)
材料 / Material	EPO
涵道 / EDF	105mm EDF, 12叶尼龙+纤/ blades
起落架 / Landing gear	全金属液压腿减震版本

建议配置 / Recommended Configuration:

电机 / Motor	4258 / 1000KV (8s) 无刷 / Brushless 4258 / 1200KV (6s) 无刷 / Brushless
电调 / ESC	160A, 5~14S
电池 / Battery	6s, 5000 mAh, 40C, 锂电 / Li-Po
舵机 / Servo	12gx7, 25gx1
轮子 / Wheel	可选配安装刹车轮



扫码关注，谢谢支持！

www.hsdjets.com

hsd@hsdjetshuang sai.com

广东省东莞市虎门镇怀德矮岗塘仔工业区 B 栋 (HSDJETS 工业园) (邮编: 523926)
HSDJETS Industry Park, Aigang Industry District, Huaide, Humen Town, Dongguan City,
Guangdong Province, China (Post: 523926)

©2017 黄赛航空 版权所有

Designed by HSDJETS. Printed in China

想了解更多产品视频、图片、注意事项等信息

请登陆: www.hsdjets.com

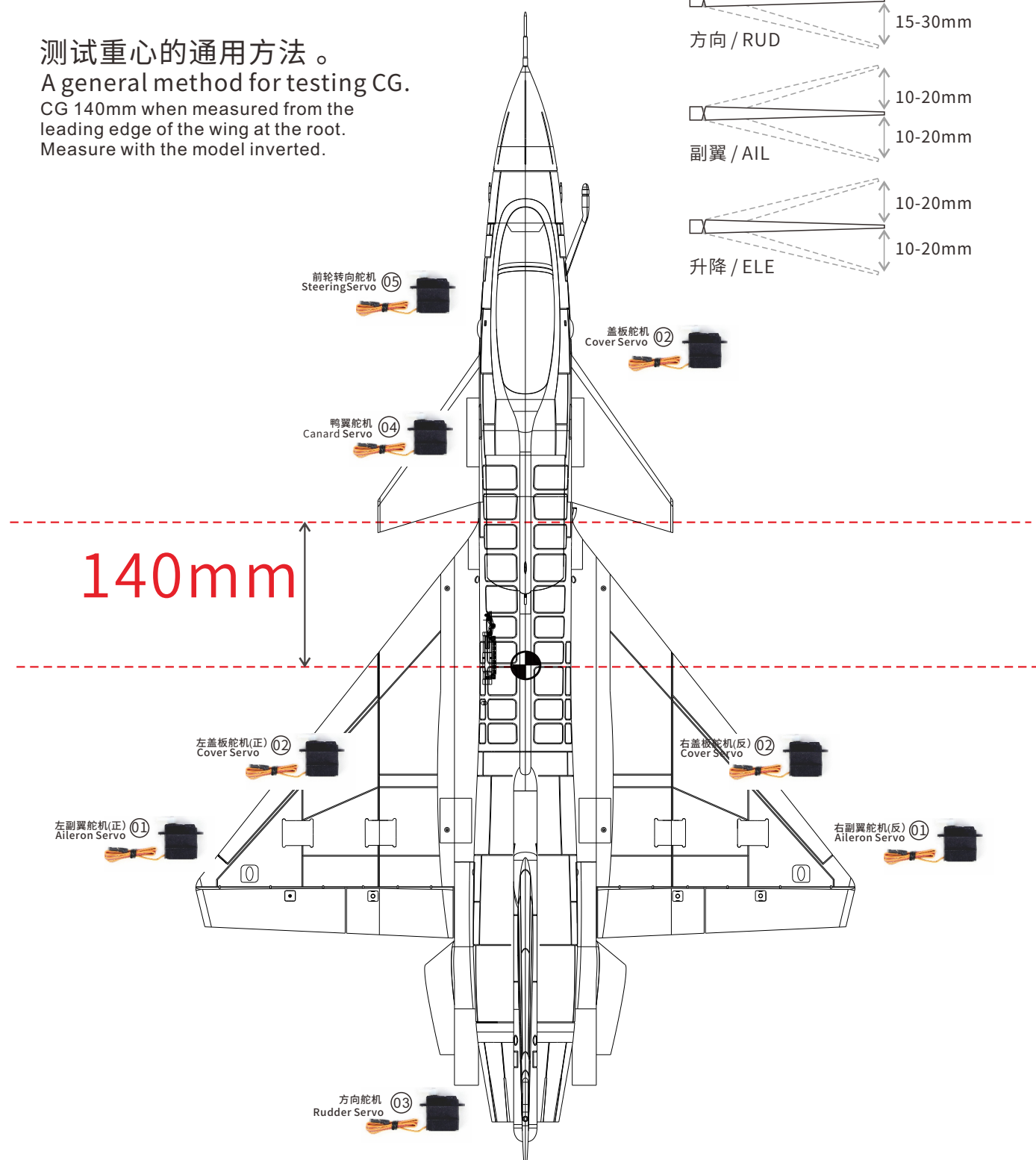
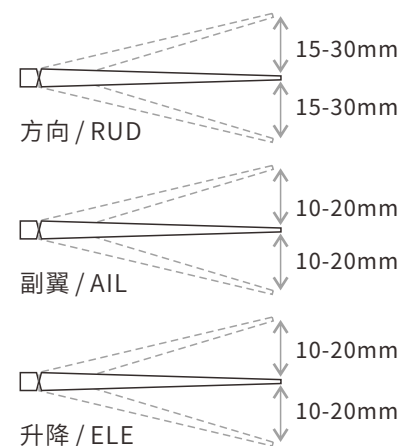
Want to learn more about the product video, pictures,
and other matters of attention Please log in: www.hsdjets.com

105mm J-10 EDF

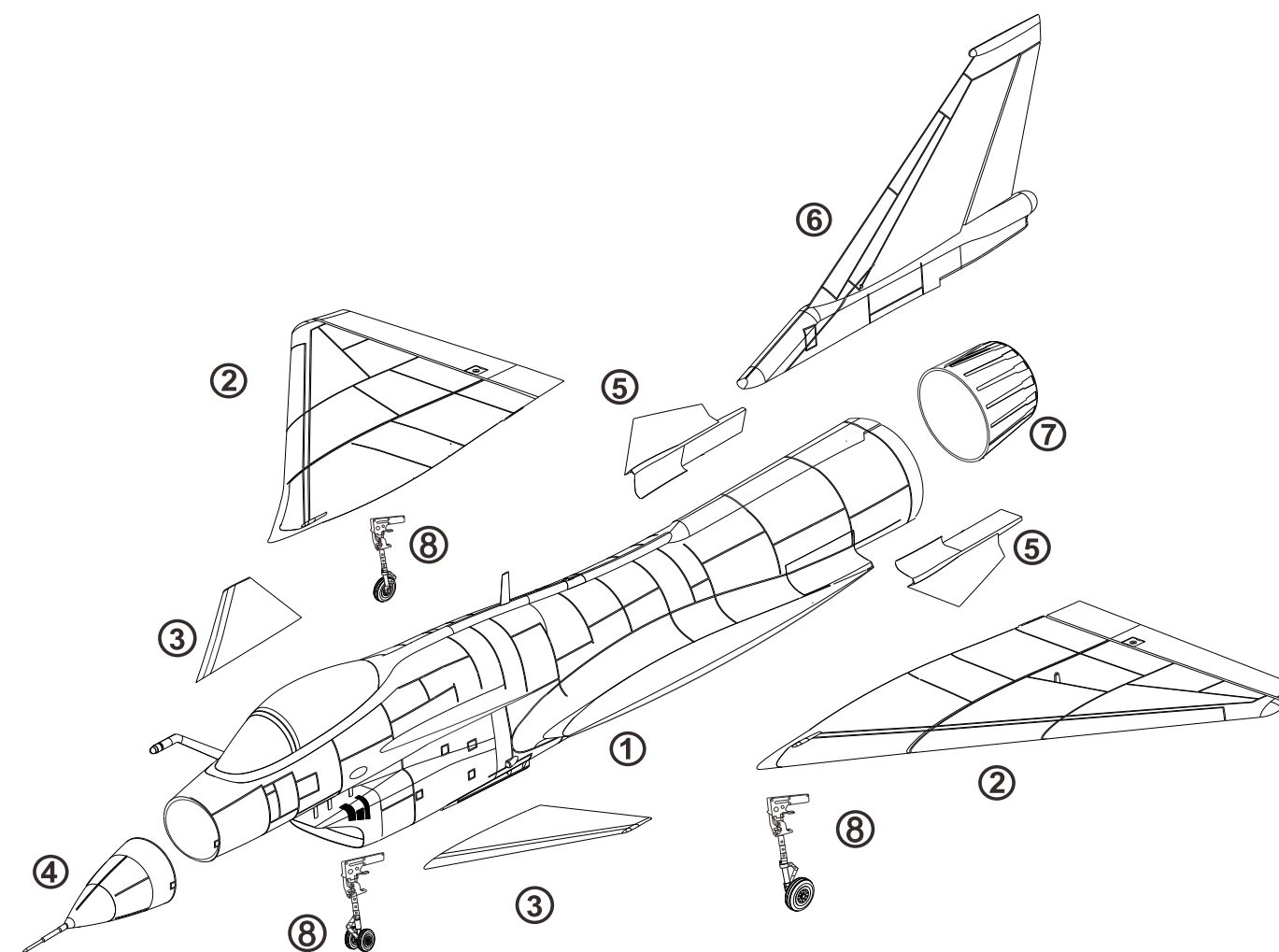
特别提醒 SPECIAL REMINDER

测试重心的通用方法。
A general method for testing CG.
CG 140mm when measured from the leading edge of the wing at the root.
Measure with the model inverted.

建议舵量：
Recommand surface travel:



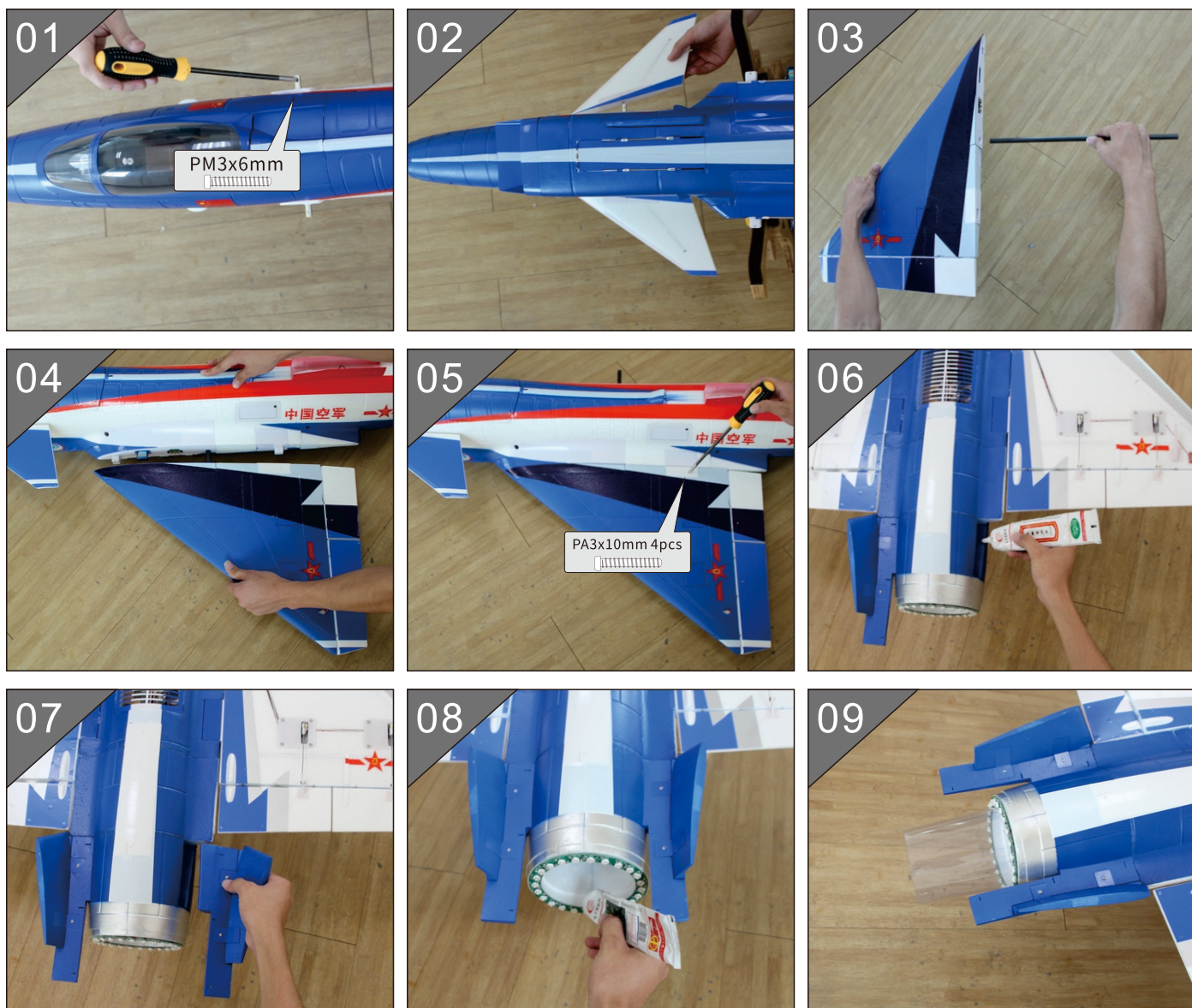
产品安装图 / DECOMPOSITION GRAPH



- | | |
|-----------------|-------------------------|
| 1. 机身/Fuselage | 5. 腹翼/Ventral fin |
| 2. 主翼/Main wing | 6. 垂尾/Vertical tail |
| 3. 鸭翼/Canard | 7. 尾管/Tail pipe |
| 4. 鼻椎/Nose | 8. 起落架/Landing gear set |

105mm J-10 EDF

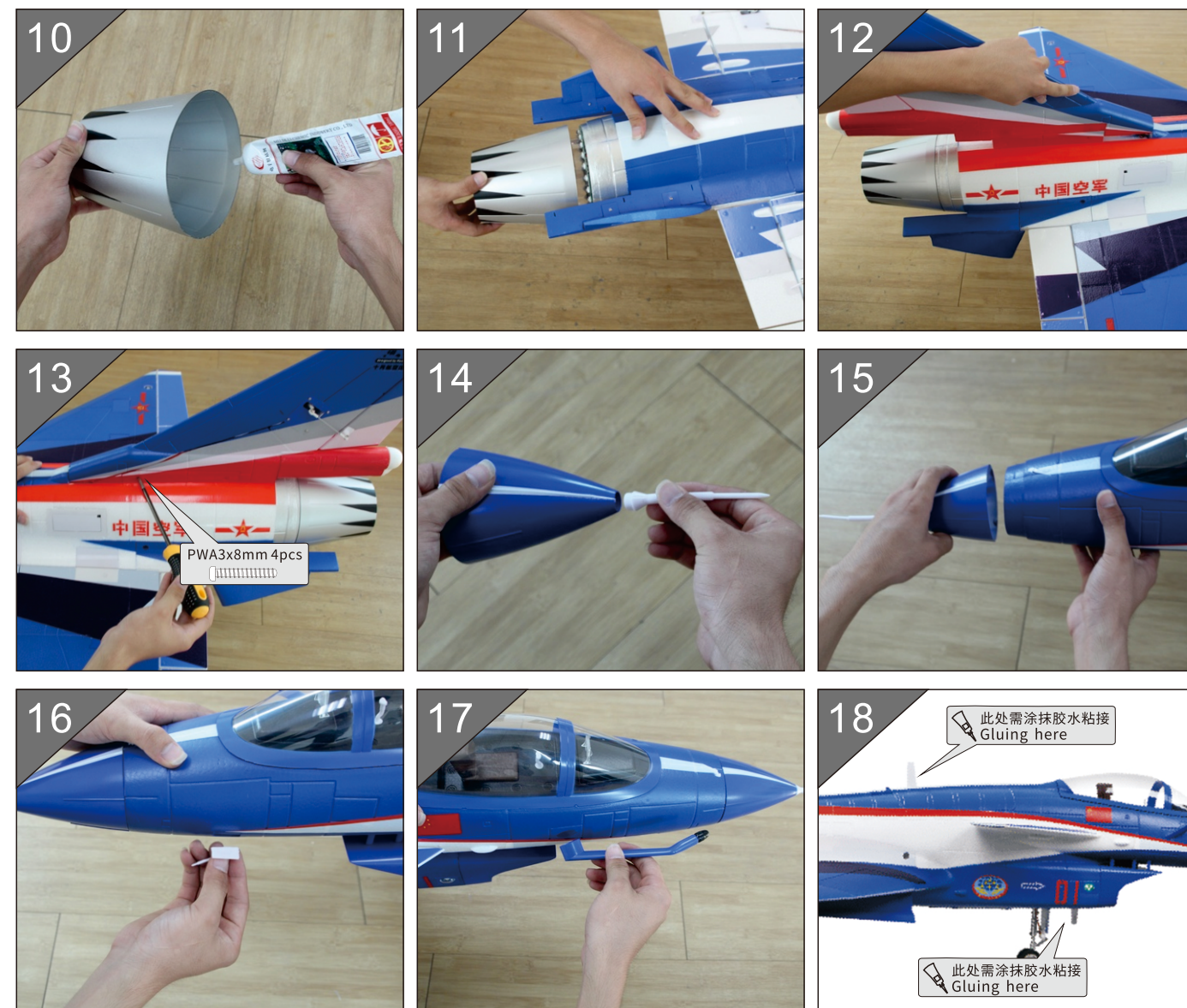
组装步骤 / ASSEMBLY



- 1.(1)(2)将鸭翼用螺丝固定在机身上
- 2.(3)(4)(5)将碳杆推入机翼，使碳杆中心与翼板边缘重合，插入机身并使用螺丝和螺丝刀固定好
- 3.(6)(7)使用胶水将左右腹翼粘贴在机身位置
- 4.(8)(9)(10)(11)使用胶水将尾管固定在机身尾部，如图所示。

- 1.(1)(2)Install the canard using the screws and screw driver as shown.Repeat this step for the remaining wing panel.
- 2.(3)(4)(5)Insert the carbon spar into one of the wing pannels.Push the carbon spar into the wing until the center of the spar meets the edge of wing panel. Put the carbon spar into fuselage and fix the wing using screws and screw driver .
- 3.(6)(7)Install the ventral fins using glue .
- 4.(8)(9)(10)(11)Glue the tail pipes and put them into the tail of fuselage.

组装步骤 / ASSEMBLY

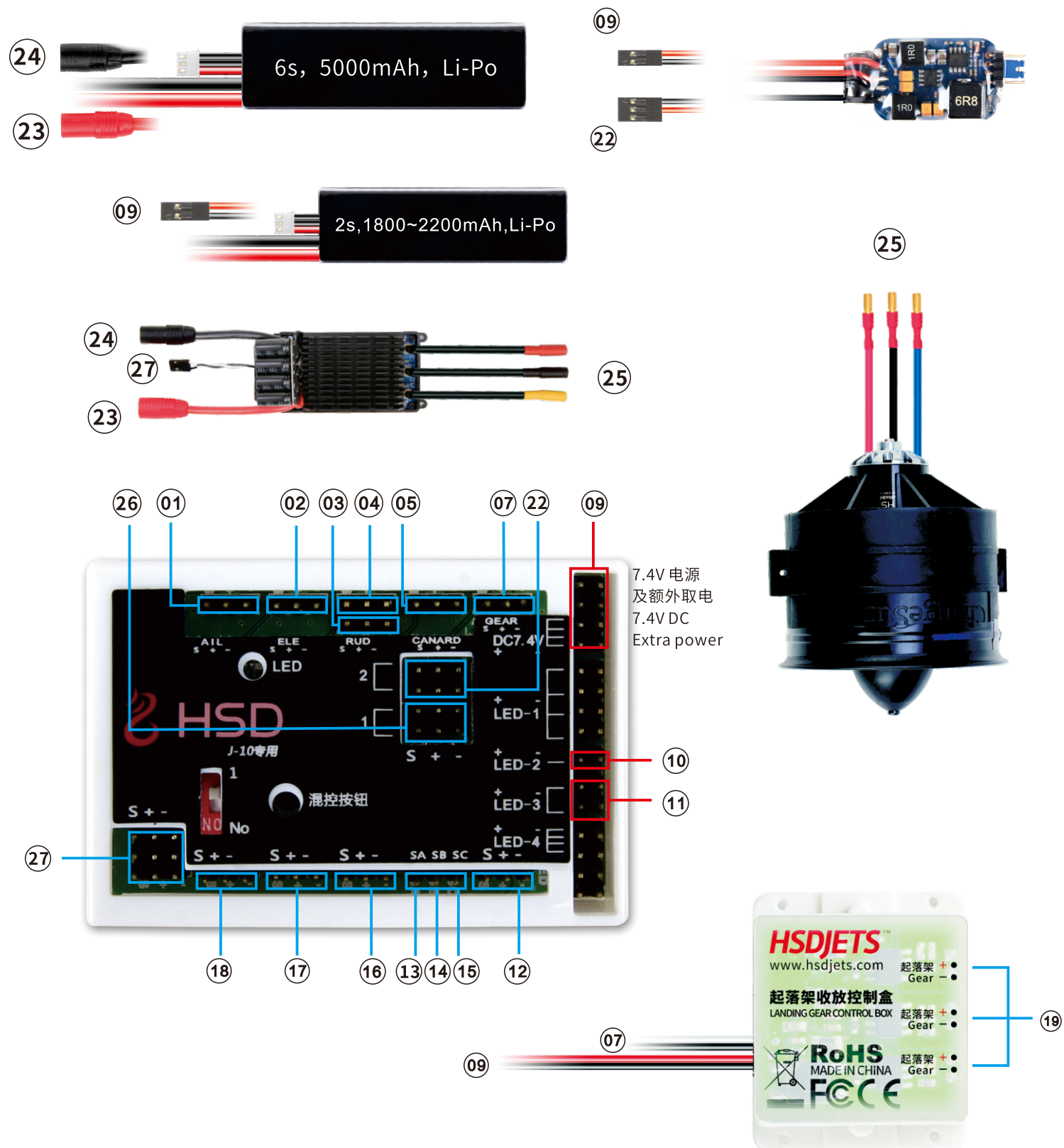


- 5.(12)(13)使用螺丝以及螺丝刀将垂尾安装在机身尾部
- 6.(14)(15)(16)使用胶水将空速管与鼻锥组合好后安装在机头位置，并安装好装饰件
- 7.(17)(18)使用胶水将加油管安装在正确位，将J-10翻转过来，使用胶水将塑料装饰件粘贴在对应位置上

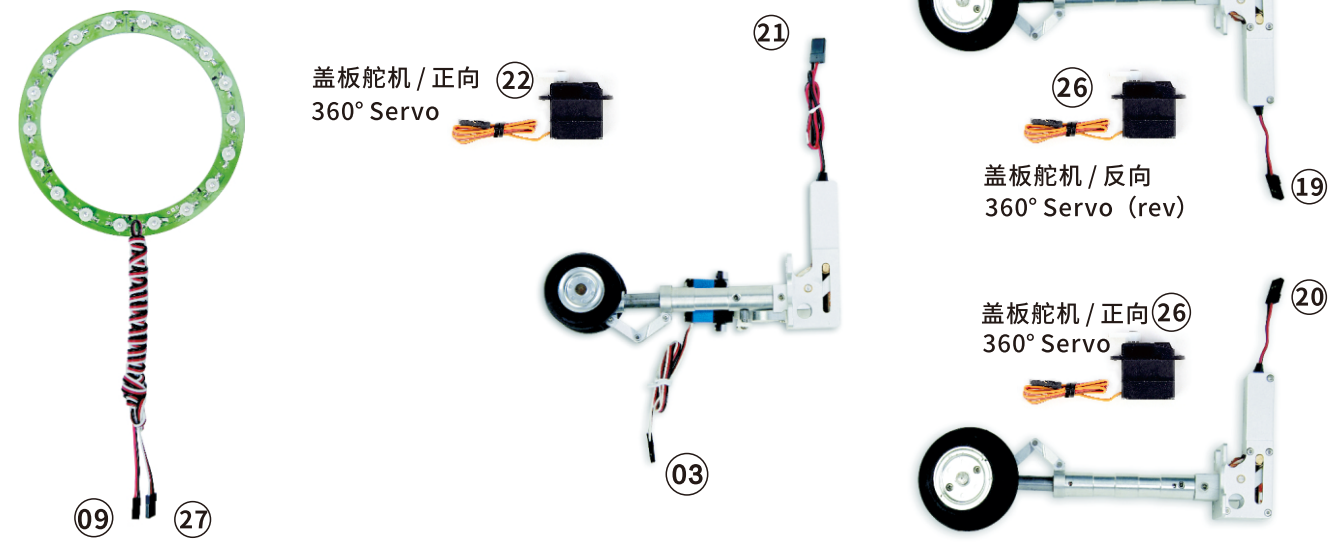
- 5.(12)(13)Install the vertical stab into the tail of fuselage using screw and screw driver.
- 6.(14)(15)(16)Install the pitot tube on the nose as shown. Then glue the pitot tube into the right place.
- 7.(17)(18)Glue fuel filler pipe into the right place as shown.Now, turning over the J-10 ,glue the antennas into the right place as shown.

105mm J-10 EDF

接线图 / CONNECTION GUIDE



! 刹车轮的刹车力度是由遥控器的舵量行程调节大小,行程越大,刹车力度则越大,行程越小,刹车力度则越小
 The brake strength controlled by the RC end point, the larger end point, the greater strength, vice versa



! 舱门盖板舵机是特制的360度舵机,舱门开启或关闭后,5秒内后会自动断电,略有声音属于正常现象
 The door cover servo is a specially designed 360 degree servo,once the door open or close, it will automatically power off in 5 second, that is a normal phenomenon

- ②① 副翼信号输出 Aileron signal output
- ②② 升降信号输出 Elevator signal output
- ②③ 转向信号输出 Steering signal output
- ②④ 方向信号输出 Rudder signal output
- ②⑤ 鸭翼信号输出 Canard signal output
- ②⑦ 起落架信号一次输出 Landing gear signal output (1st)
- ②⑨ 7.4V 电源及额外取电 DC 7.4V The input power supply socket
- ②⑩ 前起落架LED灯供电 Nose landing gear LED
- ②⑪ 翼尖LED灯供电 Main wing LED
- ②⑫ 起落架信号输入 Landing gear signal input
- ②⑬ 刹车信号输出 Brake signal output
- ②⑭ 关闭鸭翼 Close Canard signal output
- ②⑮ 鸭翼大小舵 Canard servo signal output
- ②⑯ 转向 / 方向信号输入 Steering / Rudder signal input
- ②⑰ 升降信号输入 Elevator signal input
- ②⑱ 副翼信号输入 Aileron signal input
- ②⑲ 起落架信号输出 Landing gear signal output
- ②㉑ UBEC 信号输出 UBEC signal input
- ②㉒ 后起落架盖板信号输出 Main landing gear cover signal output