

规格 / Specifications:

|                    |   |
|--------------------|---|
| 翼展 / Wingspan      | 1245 mm / 49 in   |
| 机长 / Length        | 1809 mm / 71.2 in   |
| 重量 / Weight        | 4.8 Kg / 10.6 ib (6S) 、 5.1 Kg / 11.2 ib (8S) 、 5.6 Kg / 12.3 ib (6S) |
| 材料 / Material      | EPO   |
| 涵道 / EDF           | 105mm EDF, 12 叶 / blades  |
| 起落架 / Landing gear | 全金属油压减震电动收放 / All metal oil shock electric retractable                |

配置 / Configuration:

|              |   |
|--------------|---|
| 电机 / Motor   | 4253 / 1100KV(8S), 4253 / 700KV(12S) 无刷 / Brushless               |
| 电调 / ESC     | 120A 专业无刷 / Pro Brushless (2s~8s) 150A 专业无刷 / Pro Brushless (12s) |
| 电池 / Battery | 6S, 5000mAh, 40C / 8S, 5000mAh, 40C 锂电 / Li-Po                    |
| 舵机 / Servo   | 25g×2 PCS, 12g×9 PCS  |



扫码关注，谢谢支持！

www.hsdhobby.com www.hsdjets.com

hsd@hsdjetshuang sai.com

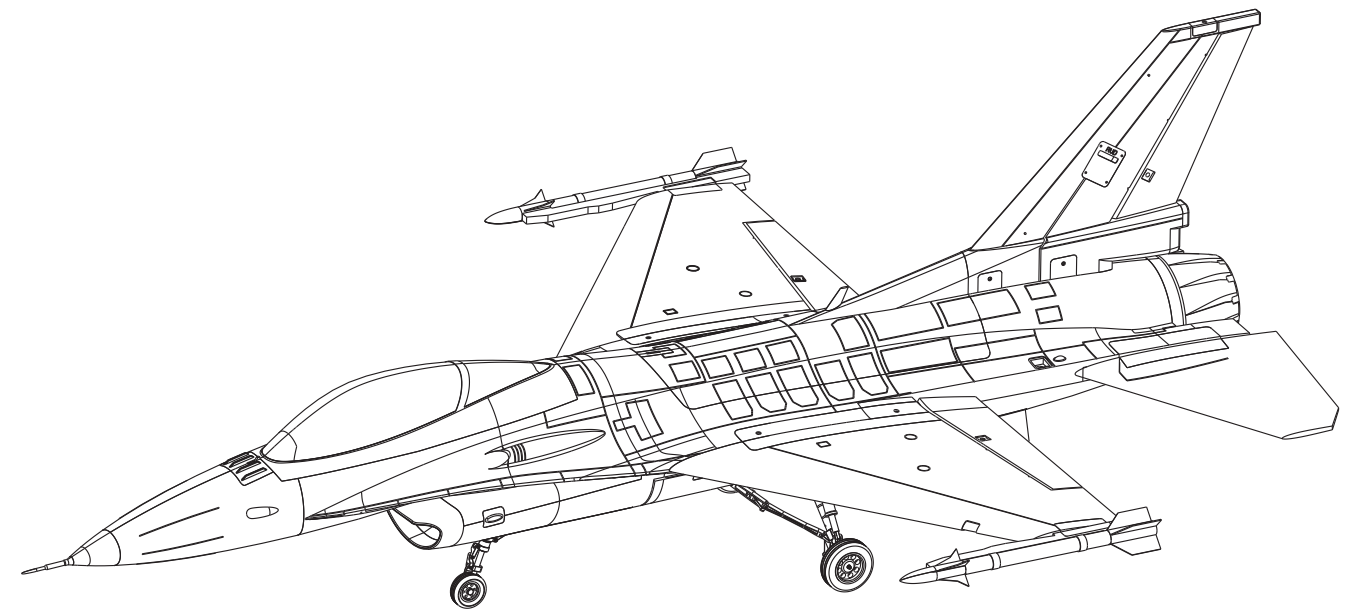
广东省东莞市虎门镇怀德矮岗塘仔工业区 B 栋 (HSDJETS 工业园) (邮编: 523926)

HSDJETS Industry Park, Aigang Industry District, Huaide, Humen Town, Dongguan City,  
Guangdong Province, China (Post: 523926)

# HSDJETS™

105mm JET-16 EDF EPO RC 2017-V3-8S

## 快速组装说明 QUICK SETUP MANUAL



产品序列号:

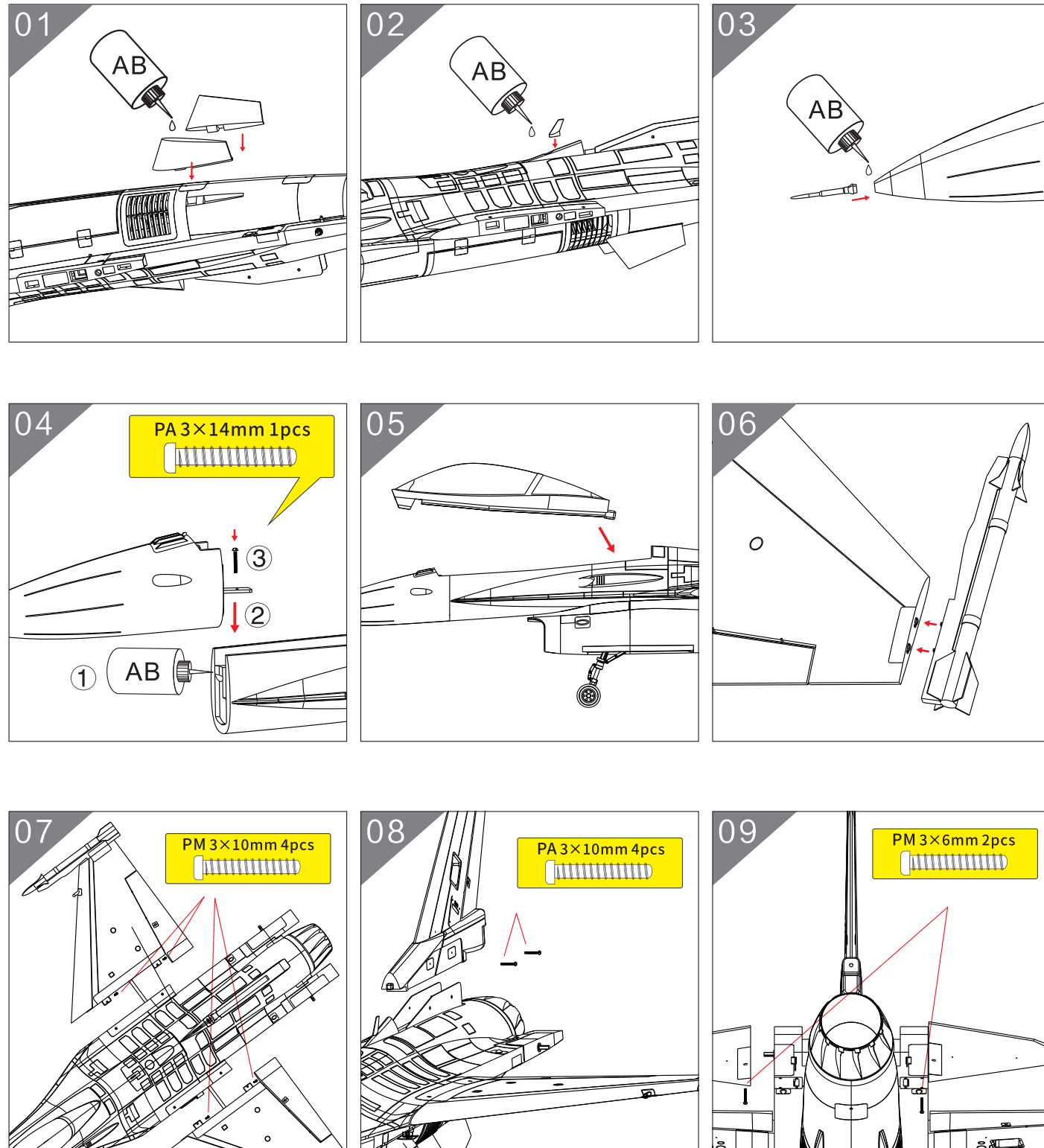
想了解更多产品视频、图片、注意事项等信息

请登陆: www.hsdhobby.com www.hsdjets.com

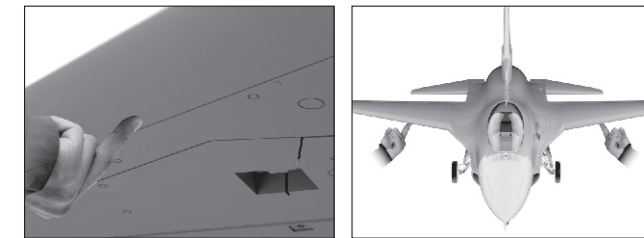
Want to learn more about the product video, pictures, and other matters of attention Please log in: www.hsdhobby.com www.hsdjets.com

# 105mm JET-16 EDF EPO RC 2017-V3-8S

## 组装步骤 / ASSEMBLY

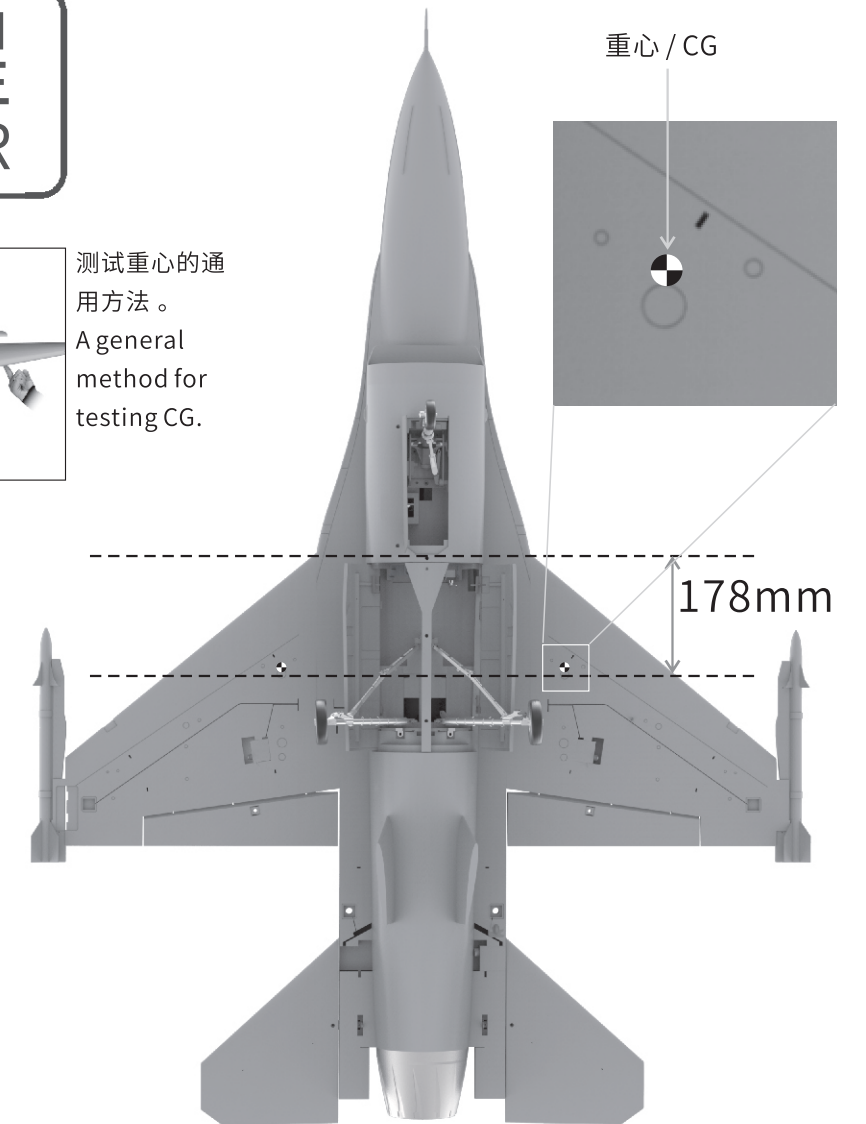
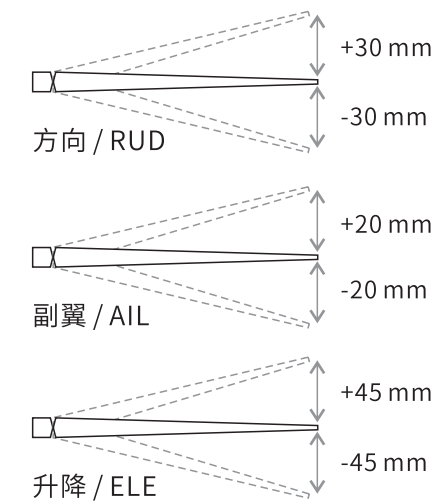


## 特别提醒 SPECIAL REMINDER



测试重心的通用方法。  
A general method for testing CG.

建议舵量：  
Recommand surface travel:

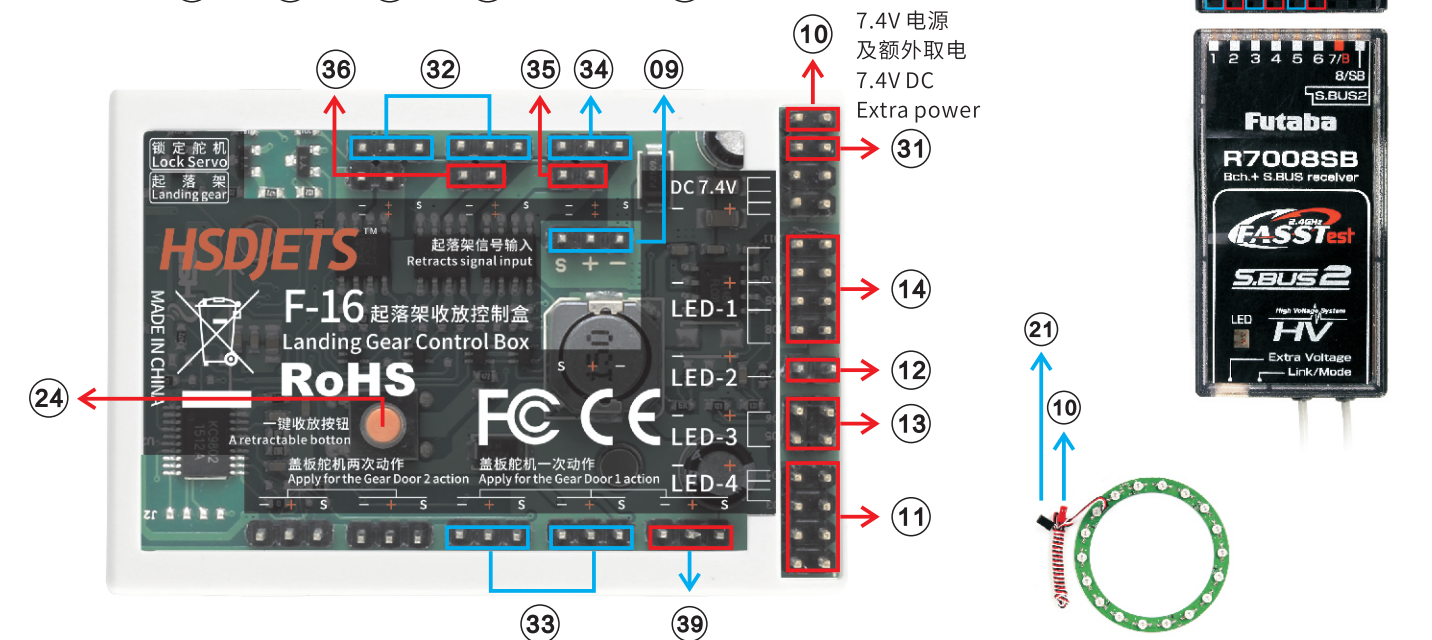
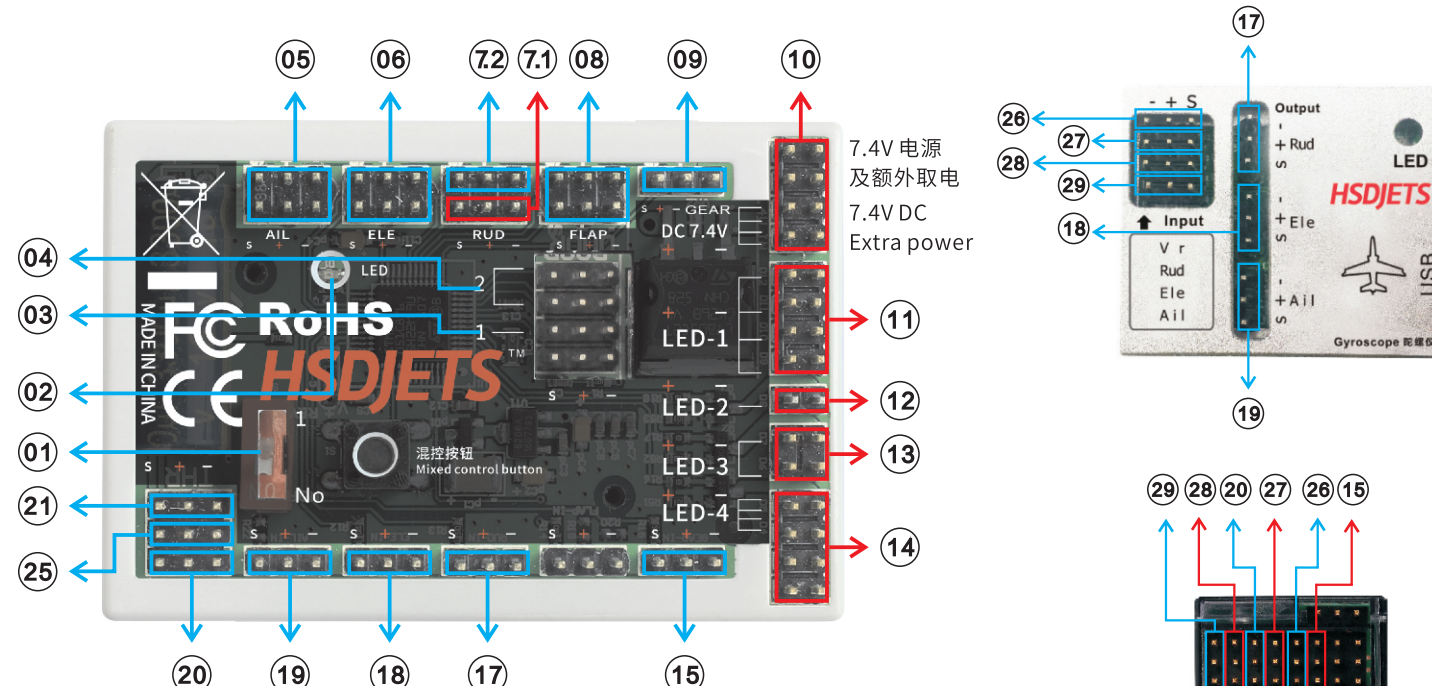
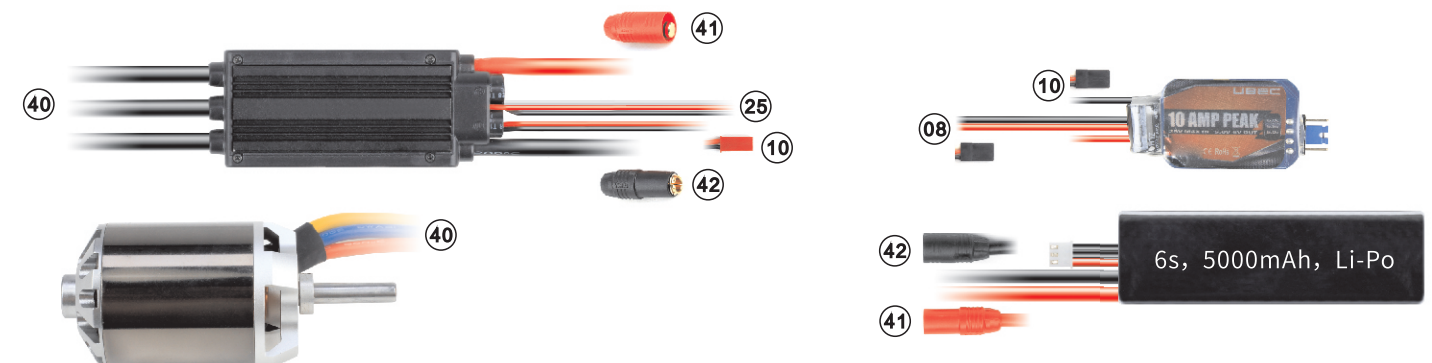


注意：平尾与机身上面边缘齐平为基准，平尾向上翘 5 mm。  
Note: Take the fuselage margin as reference, the horizontal tail upward 5 mm.

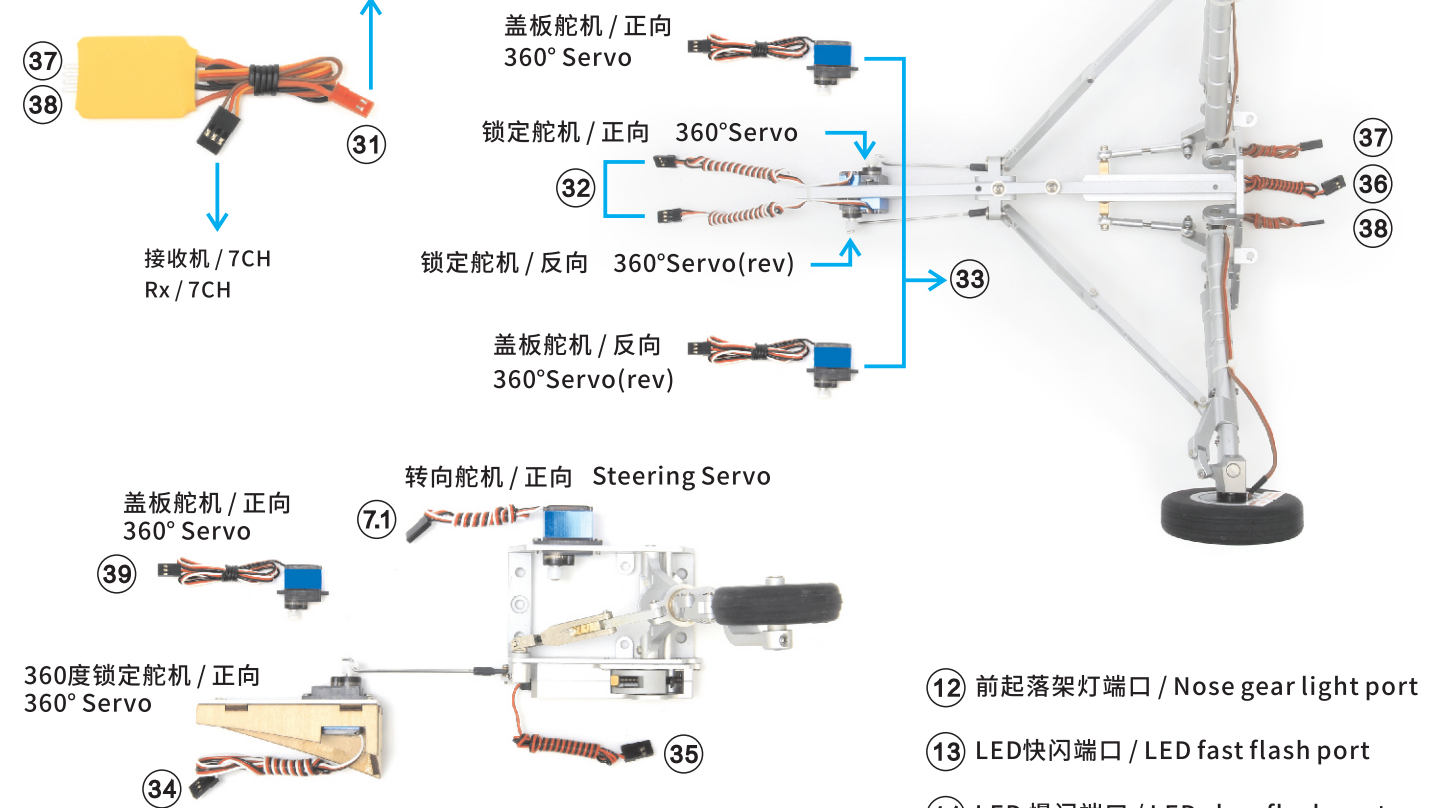
# 105mm JET-16 EDF EPO RC 2017-V3-8S



## 接线图 / CONNECTION GUIDE



**!** 刹车输入电压出厂默认为: 7.4V, 如果想增大刹车力度, 请输入11.1V电压 (可采用发动机动力电池来供电)。  
The default voltage for braker is 7.4V, if you need increase strength of braker, use higher voltage. (ex:11.1V)



- ① 反向舵机逆转开关 / Reverse Servos Reversing Switch
- ② LED 指示灯
- ③ 一次动作盖板端口 / Main landing gear cover control port
- ④ 两次动作盖板端口 / Main landing gear cover multi control port
- ⑤ 副翼舵机信号输入通道 / Aileron servos signal input channel
- ⑥ 升降舵机信号输入通道 / Elevator machine signal input channel
- ⑦ 前轮转向舵机信号输入通道 / Nose wheel steering servo signal input channel
- ⑧ UBEC 6V 电源输入 / UBEC 6V DC input
- ⑨ 起落架信号输入通道 / Landing gear signal input channel
- ⑩ DC 7.4V 输入电源插口 / DC 7.4V input port
- ⑪ LED常亮端口 / LED Always port
- ⑫ 前起落架灯端口 / Nose gear light port
- ⑬ LED快闪端口 / LED fast flash port
- ⑭ LED慢闪端口 / LED slow flash port
- ⑮ 起落架通道 / Landing gear channel
- ⑯ 方向通道 / Rubber channel
- ⑰ 升降通道 / Elevator channel
- ⑱ 副翼通道 / Aileron channel
- ⑲ 油门通道 / Throttle channel
- ⑳ 油门备用通道 / Alternate throttle channel
- ㉑ 一键收放按钮 / A retractable button
- ㉒ 灵敏度通道 / VR channel
- ㉓ 方向通道 / Rubber channel
- ㉔ 升降通道 / Elevator channel
- ㉕ 副翼通道 / Aileron channel

# 105mm JET-16 EDF EPO RC 2017-V3-8S

## 起落架爆炸图 / DECOMPOSITION GRAPH

